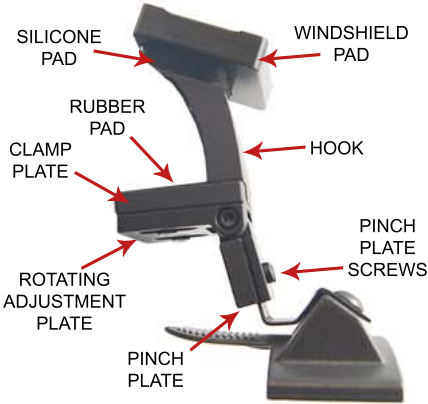
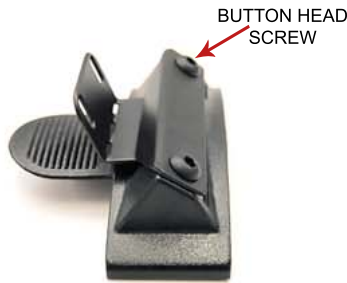




INSTALLATION INSTRUCTIONS FOR THE C6 CORVETTE REAR VIEW MIRROR



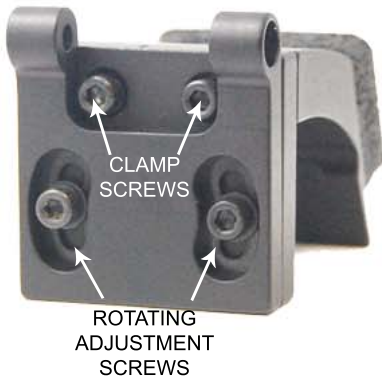
1 - Observe the illustration above which identifies the components of the mount. Remove the Vertical Adjustment Bracket by removing both Pinch Plate Screws.



2 - Remove the two suction cups that are on your existing V1 windshield mount. These two holes are now used to attach the Vertical Adjustment Bracket. The button head screws go on top of the bracket and the internal star lock washers and nuts go under the V1 windshield mount.



3 - This photo illustrates how the Hook fits into the recessed area behind the mirror. This is just a reference photo as you will not be able to see this when you install.



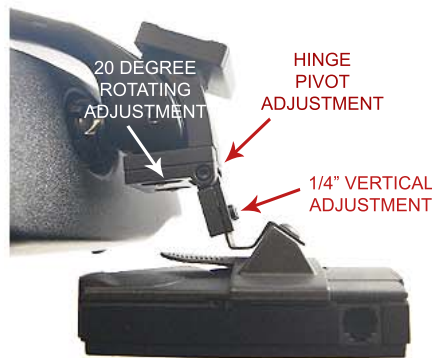
4 - The two rotating adjustment screws can be used to move the rotating adjustment plate left/right horizontally to point the radar detector in a desired direction. The two clamp screws are used to secure the mount onto the mirror as shown next in fig 5.



5 - Place the Windshield Pad onto the Silicone Pad. Position the mount as shown above. Compress the Silicone Pad into the Windshield Pad as you slide upwards into the recessed area behind the mirror. You will hear the Hook snap into place when it is positioned correctly. **Tighten both clamp screws to secure hook and mount onto mirror.**



6 - Reattach the Vertical Adjustment Bracket and Pinch Plate with the two Pinch Plate screws. Slide the Vertical Adjustment Bracket up as far as it will go before tightening the Pinch Plate.



7 - Install the RD onto the mount. Make the necessary adjustments as shown. We recommend adjusting the RD so it is as close to the bottom of the mirror as possible. After all adjustments are made, be sure to check that all adjustment screws are tight. Grab the long arm of the allen wrench to assure that these screws are securely tightened.

CAUTION

DO NOT use this mount if it interferes with the adjustability or the operation of your rear view mirror in any way.

DO NOT use this mount if the radar detector creates an unsafe viewing obstruction.

DO NOT ATTEMPT TO MODIFY THIS PRODUCT. Consult the manufacturer for assistance.

All BlendMount products are accompanied with detailed installation instructions and adjustment tips. You are encouraged to contact customerservice@blendmount.com or call J28 Design at 1-707-664-8234 for further assistance.

Your feedback is very important to us. Please email any questions or comments you have to customerservice@blendmount.com

